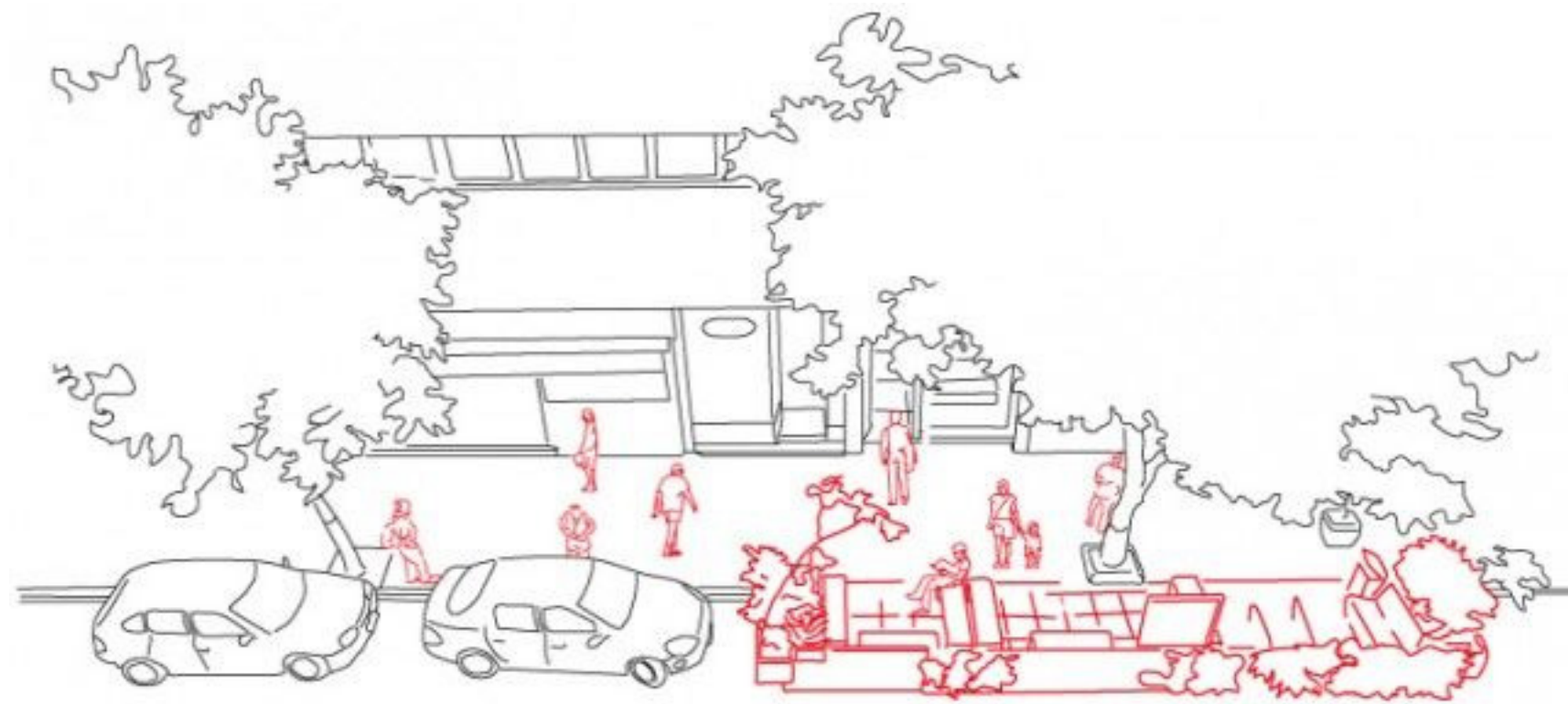
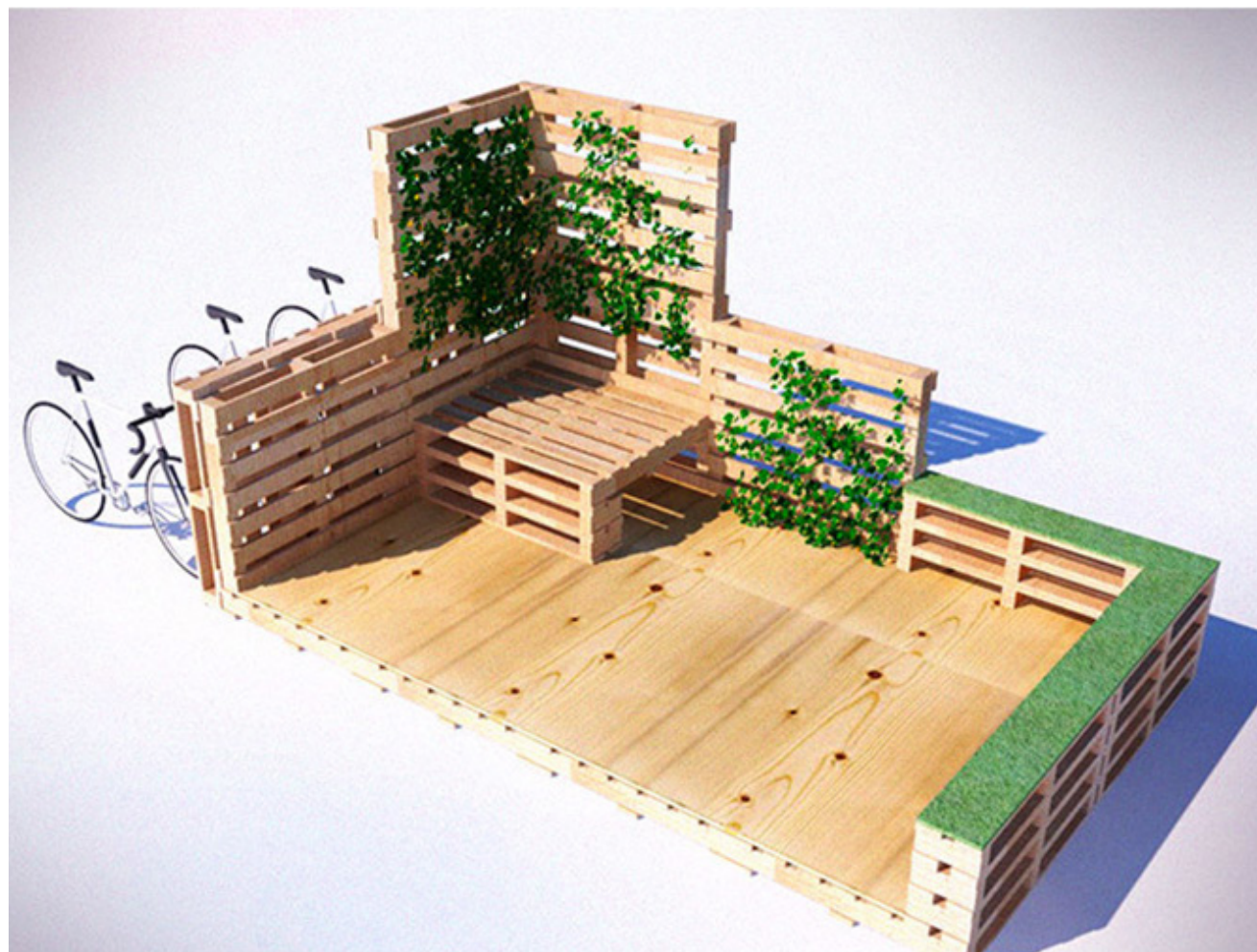


CHINATOWN PARKLET

PARKLET PRECEDENTS





DESIGNING WITH PALLETS

Pallets are transformed into platforms, street barriers, planters and seating.



OVERHEAD COVER

Left: Transparent bottles with dyed water are suspended over the parklet, they hang from a wooden frame and fishnet structure.

Above: Paper lanterns are suspended at the Chinese Lantern Festival in Beijing.

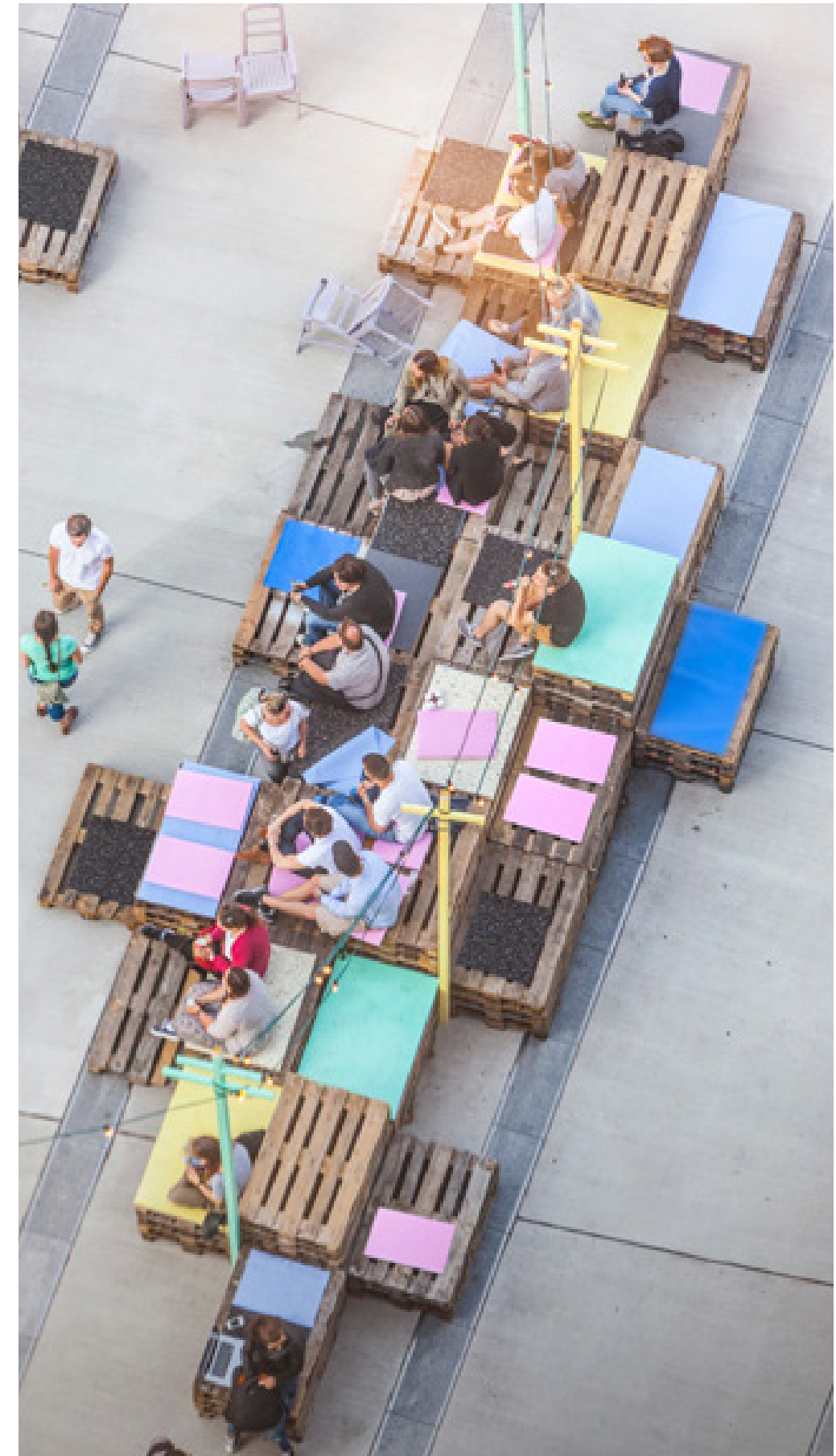


COLOR AND ACCENT

Paint and colored materials create a vibrant and attractive space.



22nd and San Jose Parklet, San Francisco



Dortmunder University Parklet



GREENERY AND FURNITURE

Above: Pallets are stood vertically and used as planters.

Right: Street furniture is made from pallets and can be adjusted for multiple functions.



EXISTING PARKLET SITE

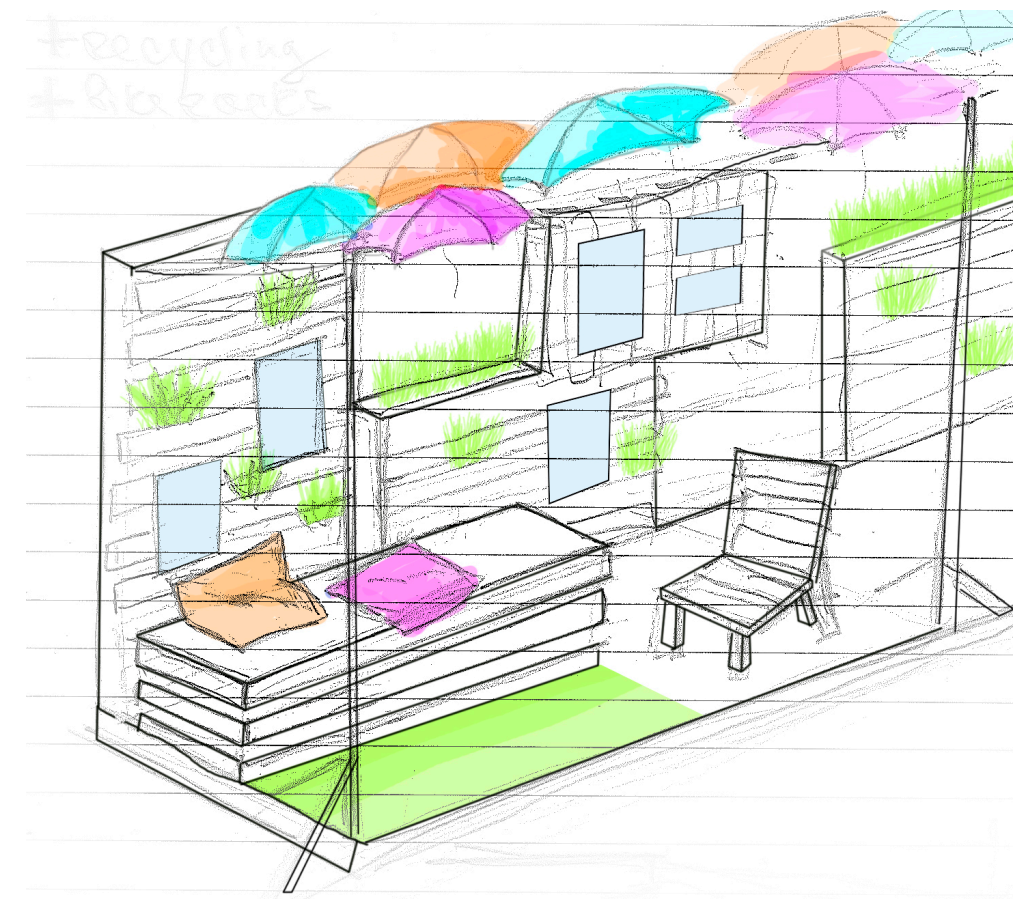
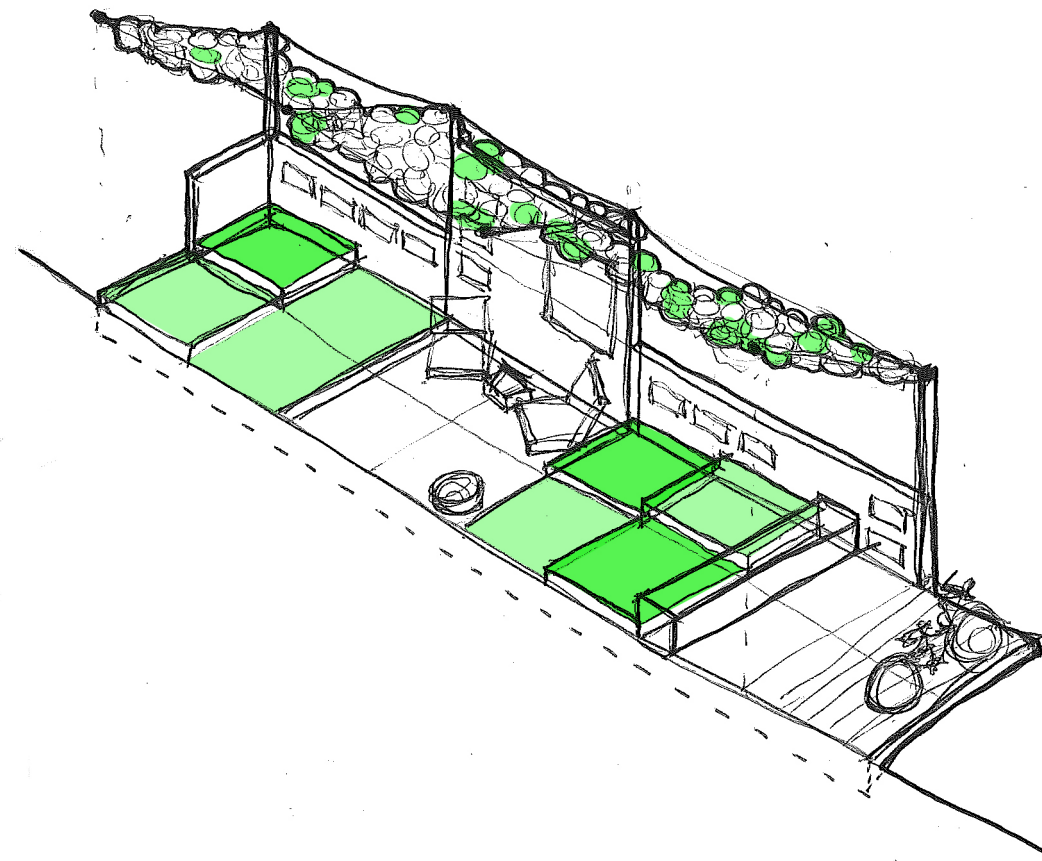
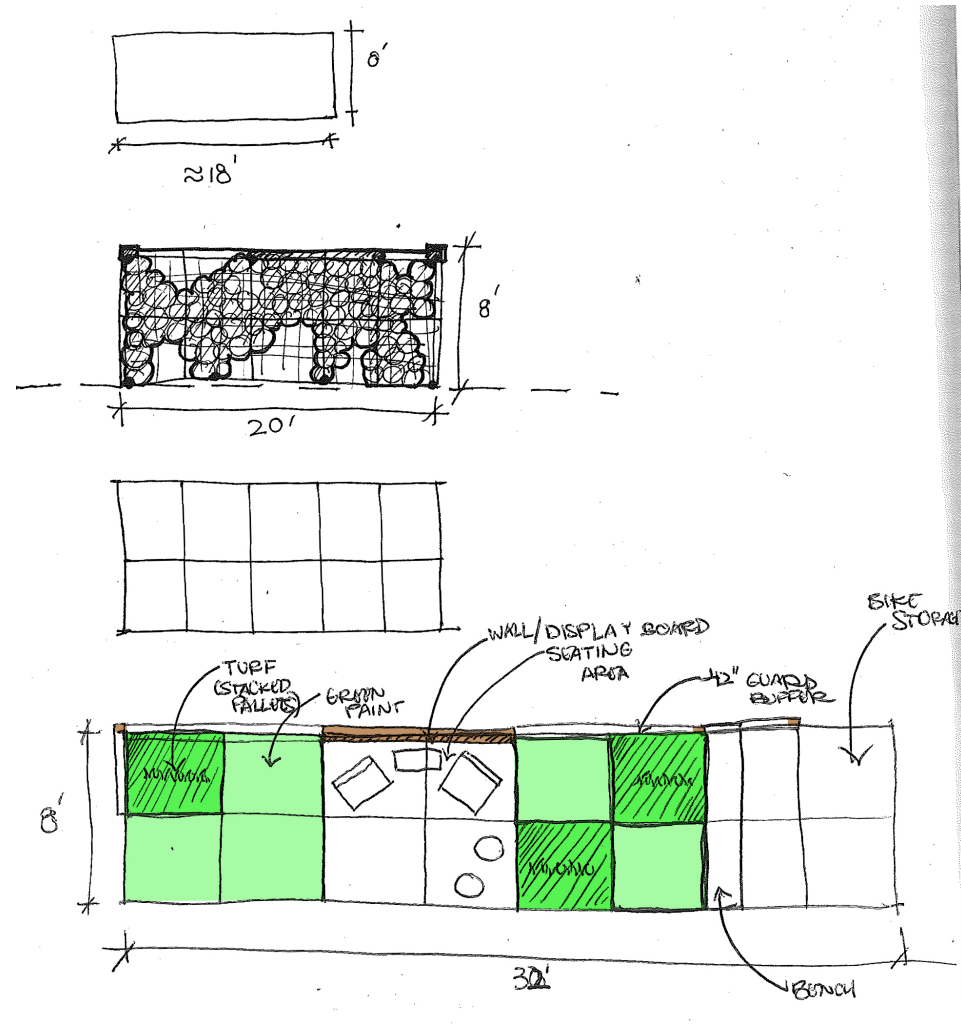


Five parking stalls available for parklet use on Nuuanu Ave. outside Arts at Marks's Garage. Each stall measuring 8x18.5 ft.

CHINATOWN PARKLET PROGRAM

1. Seating area (stools, benches, platforms)
2. SHADE Display wall
3. Bike rack 8ft x 4ft
4. Recycle-bins stall 8ft x 4ft
5. Lantern activity/ shade structure
6. Game table
7. Greenery

CHINATOWN PARKLET SKETCHES



ESTIMATED MATERIAL COSTS

BUDGET: \$500

Paint: \$20-30/gallon (Home depot)

Turf: \$36.97/15' x customizable (Home depot)

Lanterns: \$1.38/ 14" white (Wal Mart)

2 x 4: \$2.46 (Home depot)

Fishing Line: \$0.49/100 yards (Wal Mart)

Plywood Sheets: 1/2" x 2' x 2'/\$6.75 (Home depot)