

# **Waipio Point Access Road Accessible Path Concept Site Plan**

Waipahu Aloha Clubhouse

# Problem Statement

- There is no continuous or accessible pathway for Clubhouse members to walk to and from the bus stop on Farrington Highway. 80% of members commute by bus to the Clubhouse.
- The diamond head side of the street is un-walkable due to the overgrown brush and parked cars.
- The Clubhouse is located around a blind curve and there is no crosswalk for members to enter from the ewa side of the street.
- Waipio Access Road slopes from the ewa side to the diamond head side. During heavy rains, roughly 18" of water accumulates at the bottom of the Clubhouse driveway making it difficult for members to enter the Clubhouse.



# Precedent Study



photo credit: Group70 International



# Precedent Study

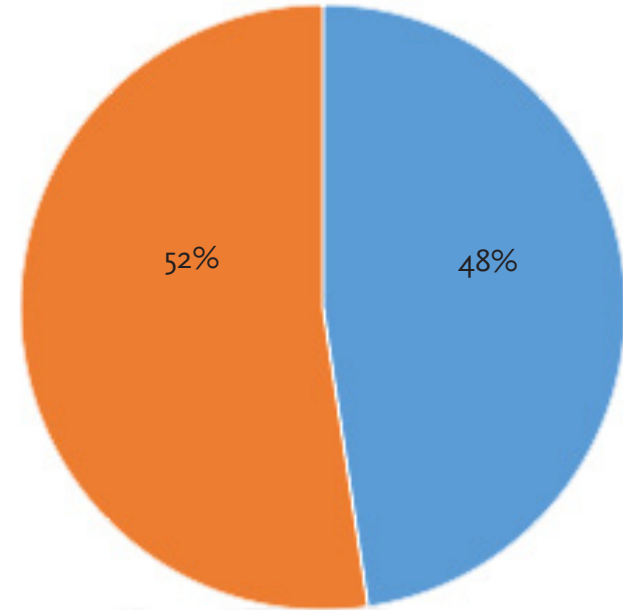
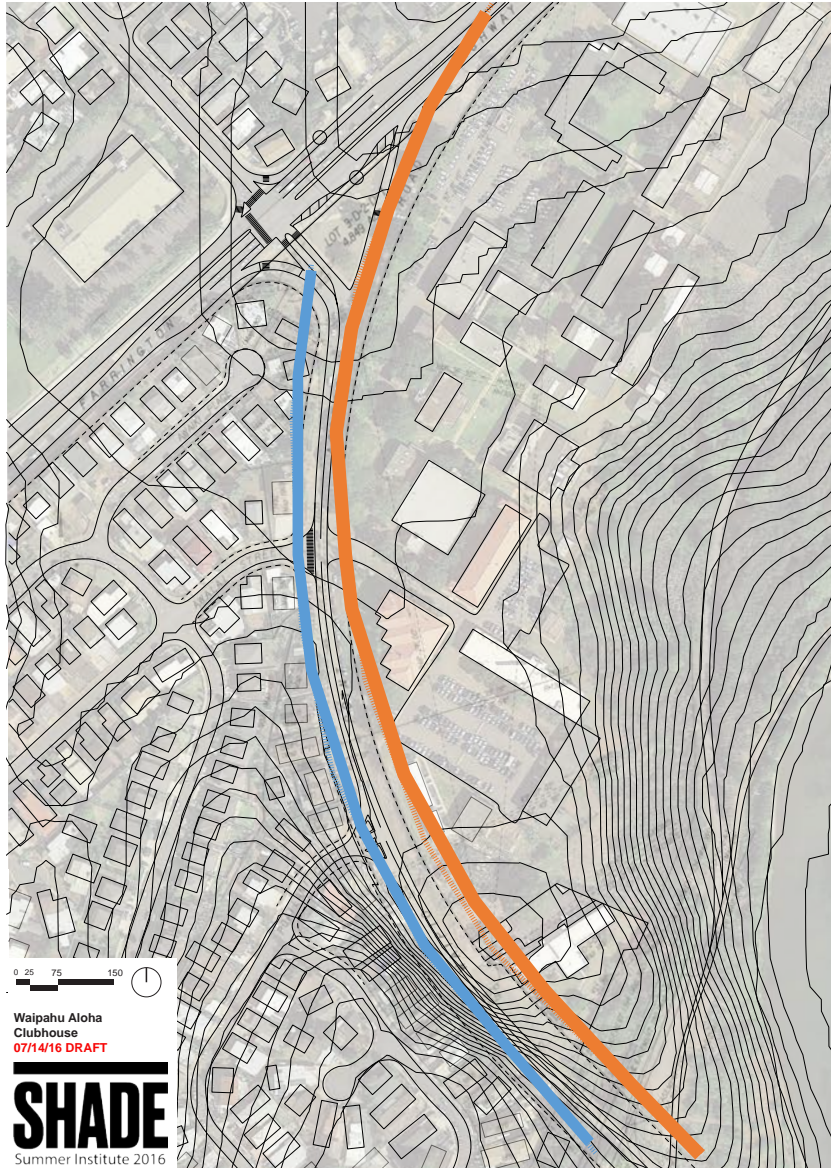


photo credit: David Croxford



photo credit: HSPLS

# Summary from Concept Proposal Presentation



- concept a: develop a pathway on the diamond head side of Waipio Access Road
- concept b: develop a pathway on the ewa side of Waipio Access Road



# Concept A - develop on the diamond head side of Waipio Access Road





**SHADE**  
Summer Institute 2016  
CONCEPT B  
07/19/16 PROGRESS MEETING

Breanna Garcia  
Austin Chan  
Kristen Patton  
Kenzie Okazaki

FARRINGTON AVENUE  
POINT STREET  
WAIPAHU AVENUE  
LOT 20-01  
4369 ACRES

Start of Multi-Use Recreational Path

Seating Areas and Parallel Parking Along New Accessible Path

New Accessible Crosswalks at Intersection

Accessible Path Across the Waipahu Aiea Clubhouse

New Crosswalks and Ramp Platform for the Waipahu Aiea Clubhouse

Breeanna Garcia  
Austin Chun  
Kristen Patino  
Keelan Okazaki



Start of Multi-Use Recreational Path

An aerial photograph showing a residential street. On the left, there is a white wall with a landscaped area featuring green trees and shrubs. A paved road with yellow double lines runs along the right side of the wall. In the background, there are houses and more trees.



New Accessible Crosswalks at Intersection

A photograph showing a paved sidewalk with a wooden bench and greenery. A person is walking on the sidewalk, holding a red umbrella. The scene is outdoors with trees and a road in the background.



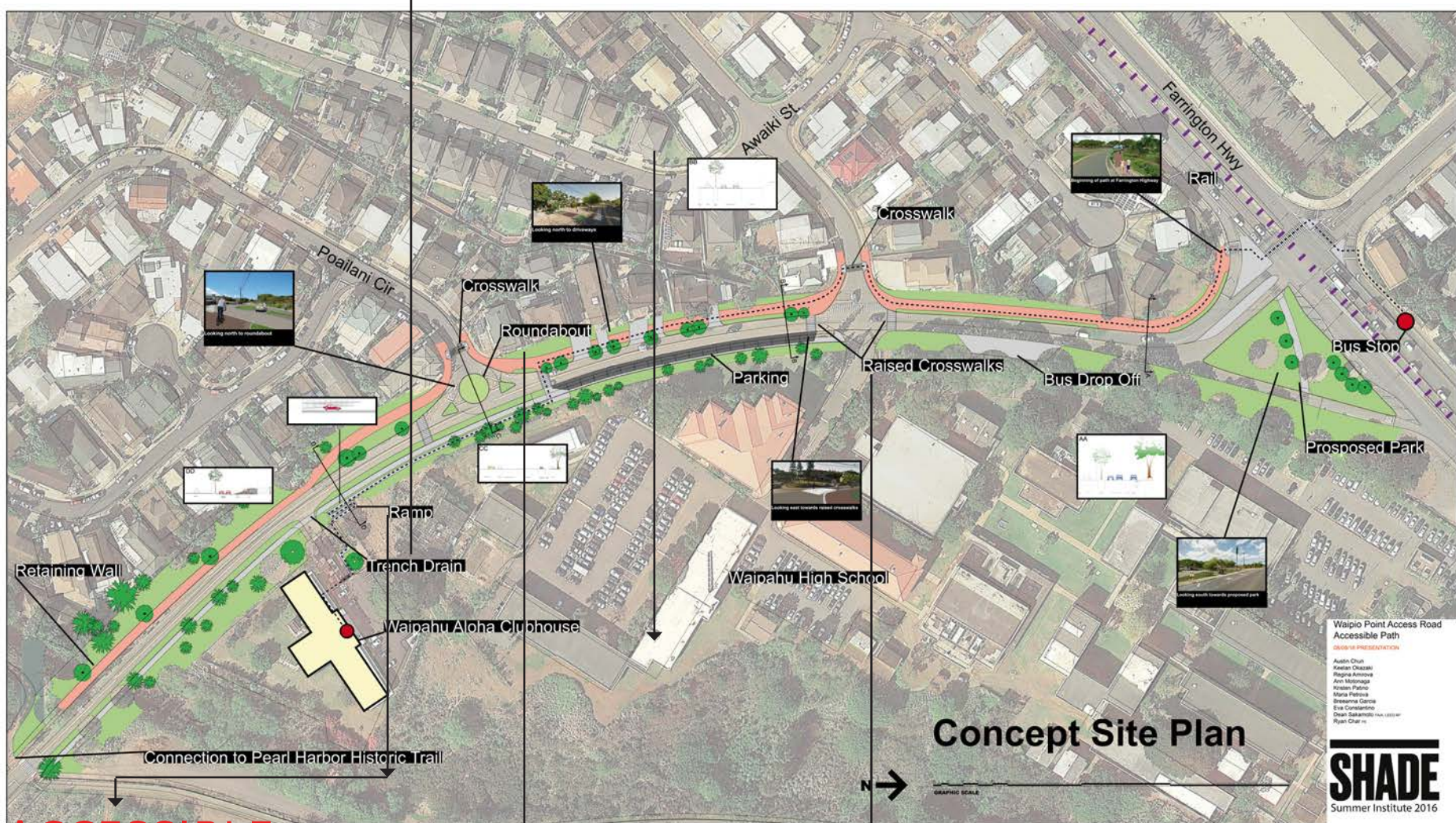


# **Waipio Point Access Road Accessible Path**

safe | accessible |  
sustainable | meaningful

# Concept Site Plan

SUSTAINABILITY



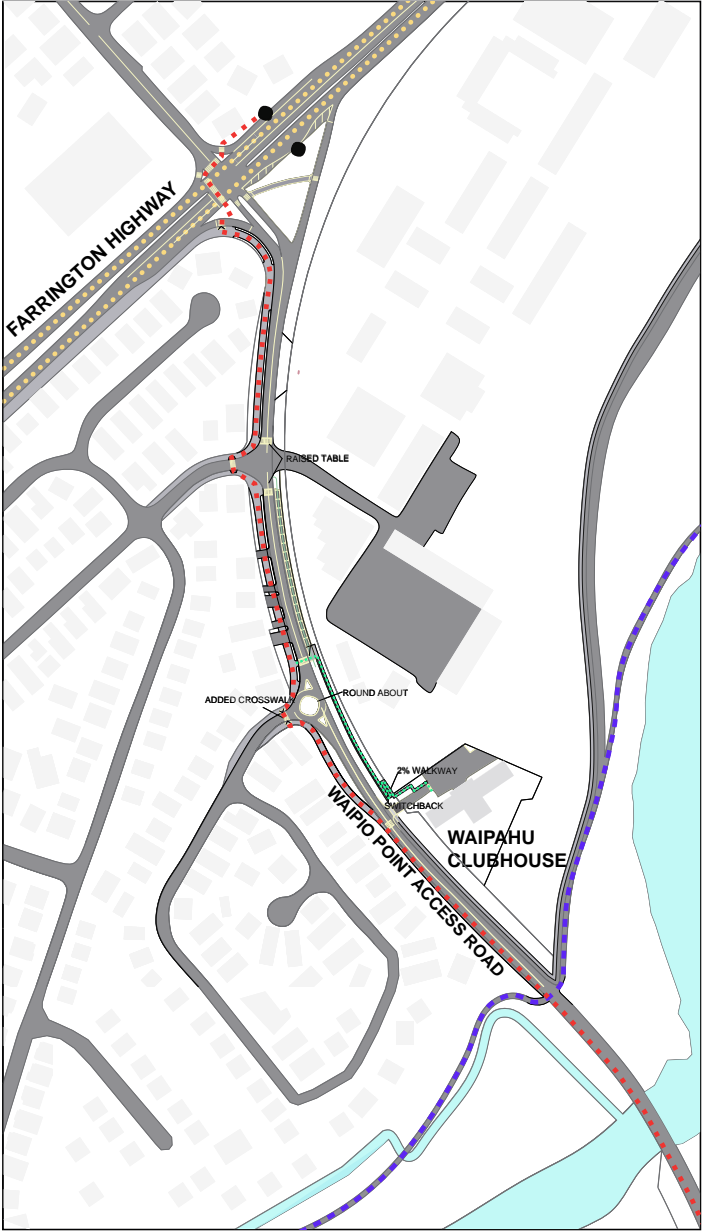
ACCESSIBLE

TRAFFIC  
MANAGEMENT

SAFETY



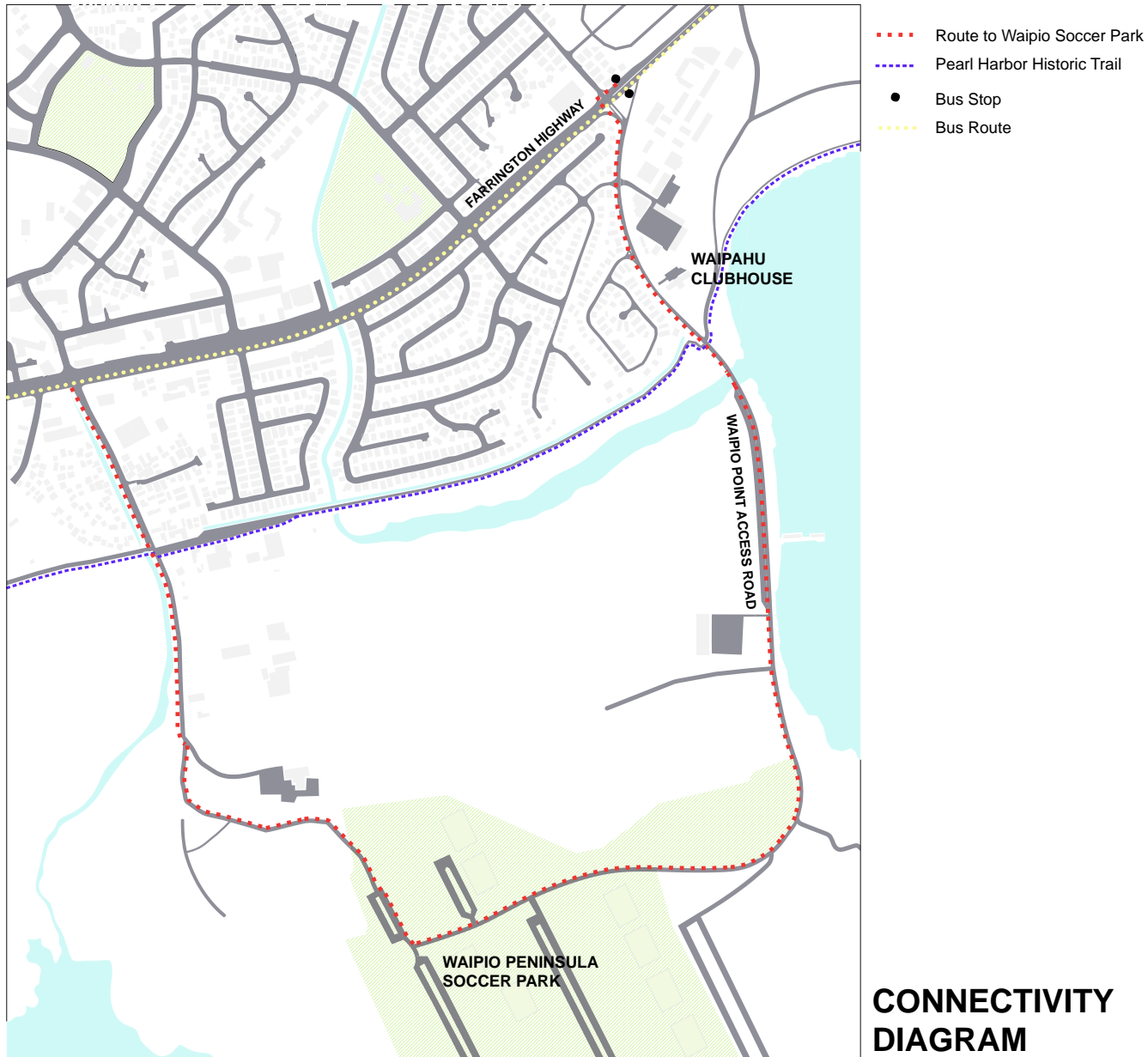
# Connectivity Diagram



- Route to Waipio Point Soccer Park
- Pearl Harbor Historic Trail
- Bus Stop
- Bus Route
- Accessible Route to Clubhouse

CONNECTIVITY  
DIAGRAM

# Connectivity Diagram





# Entry Park

before



after



# Waipio Street Entry

before

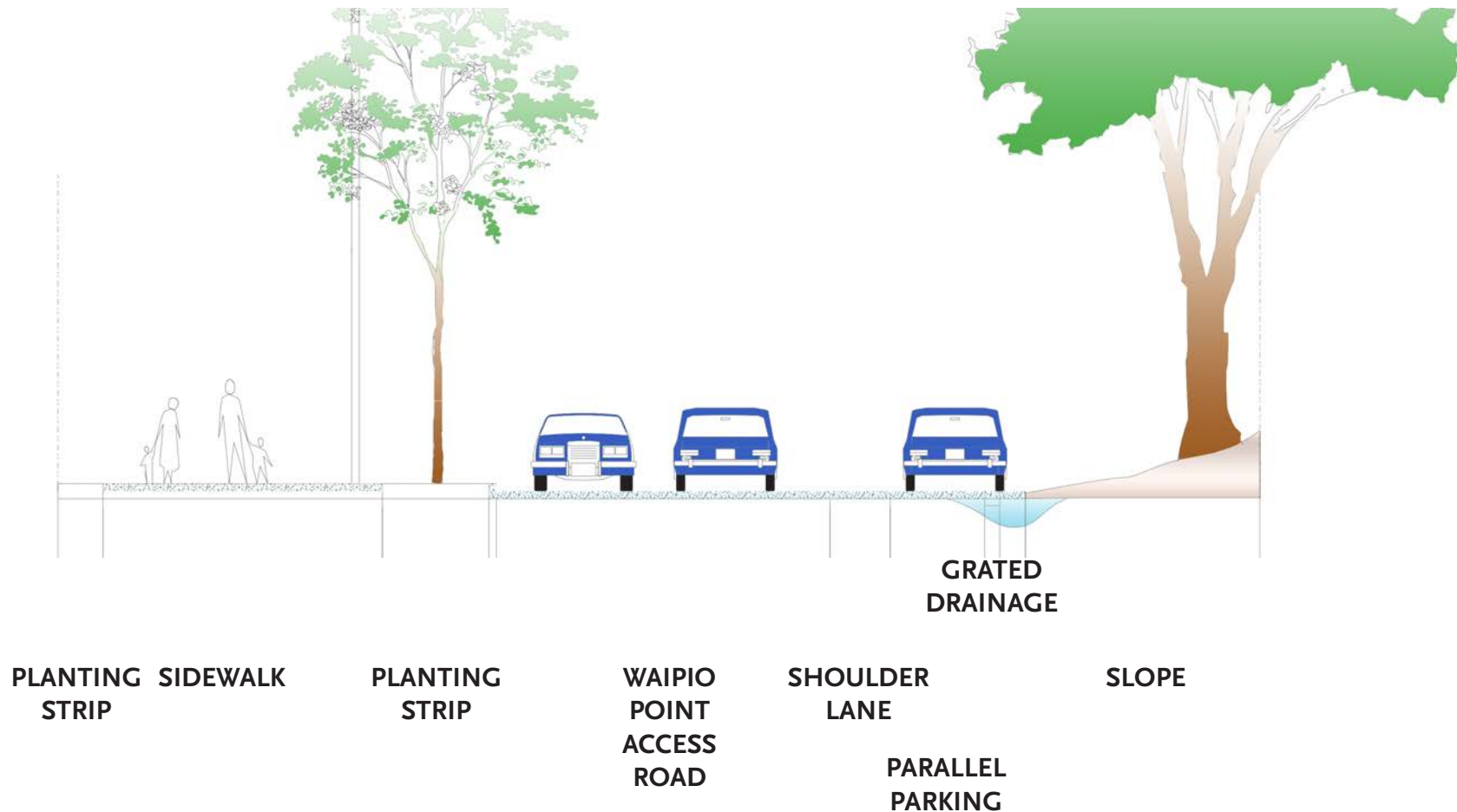


after





# Waipio Street Entry Section



SCALE:  $\frac{1}{8}" = 1'$

# Raised Table

before

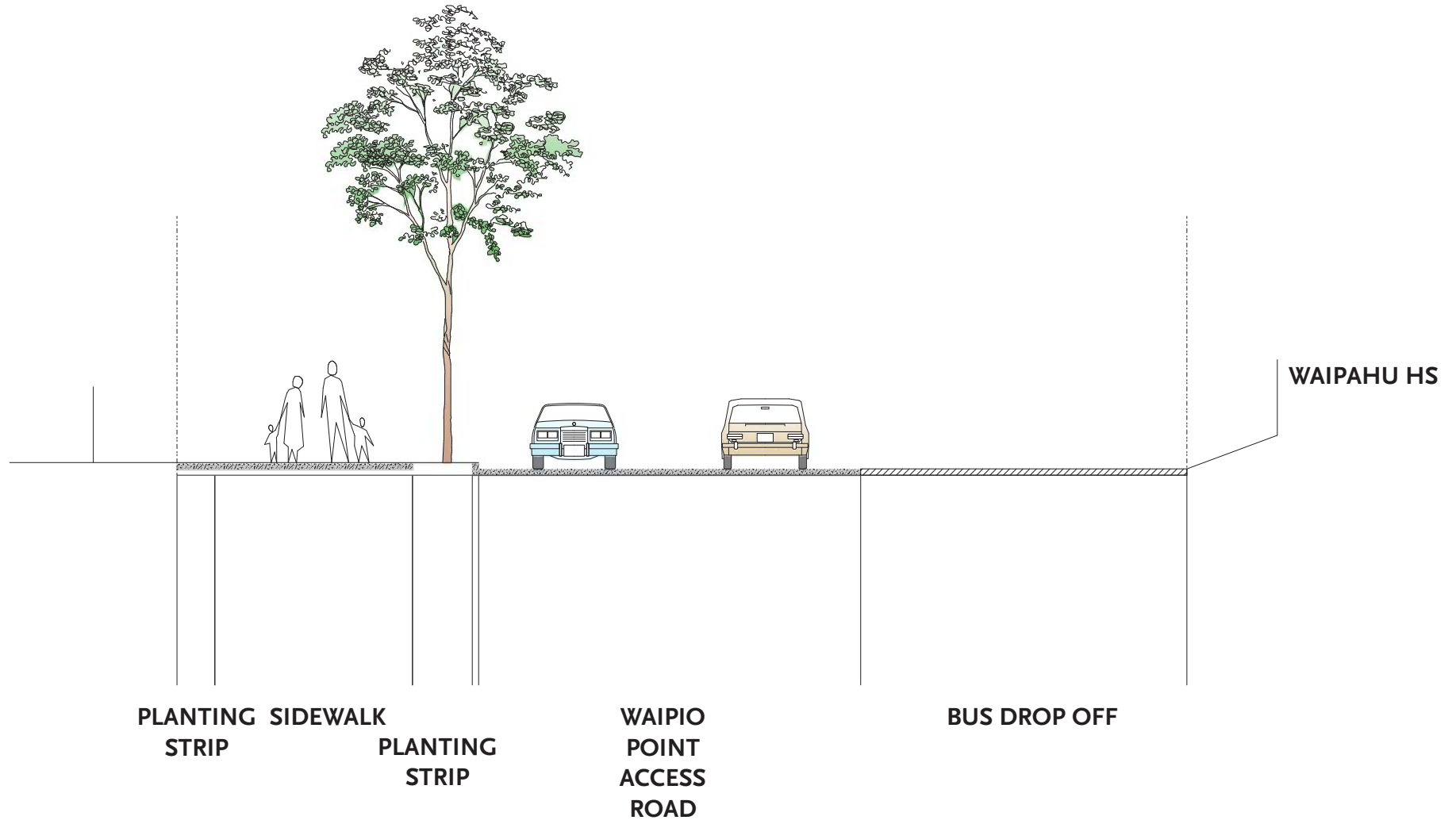


after





# Bus Drop Off Section



SCALE: 1/16" = 1'

# Waipio Access Road Driveway

before



after





# Poailani Circle Roundabout

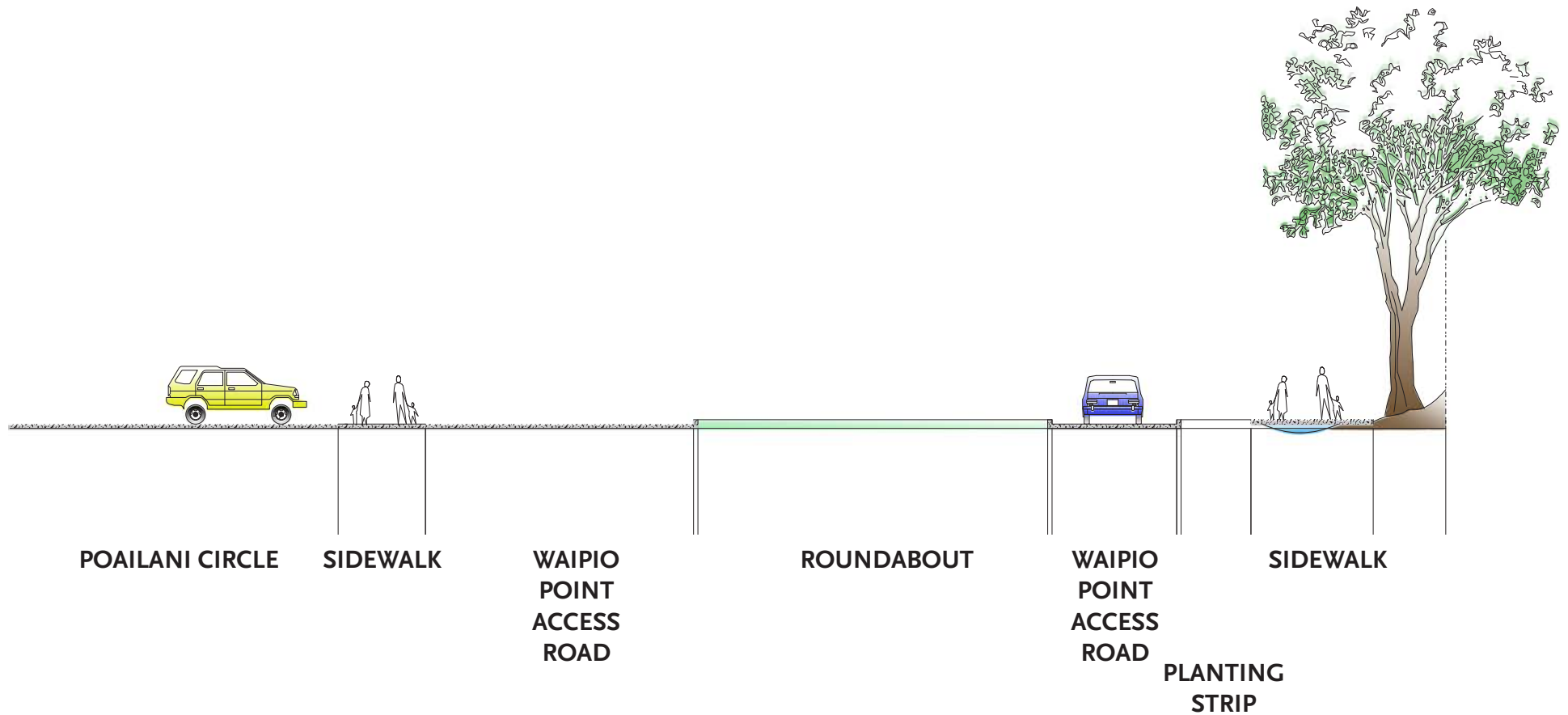
before



after



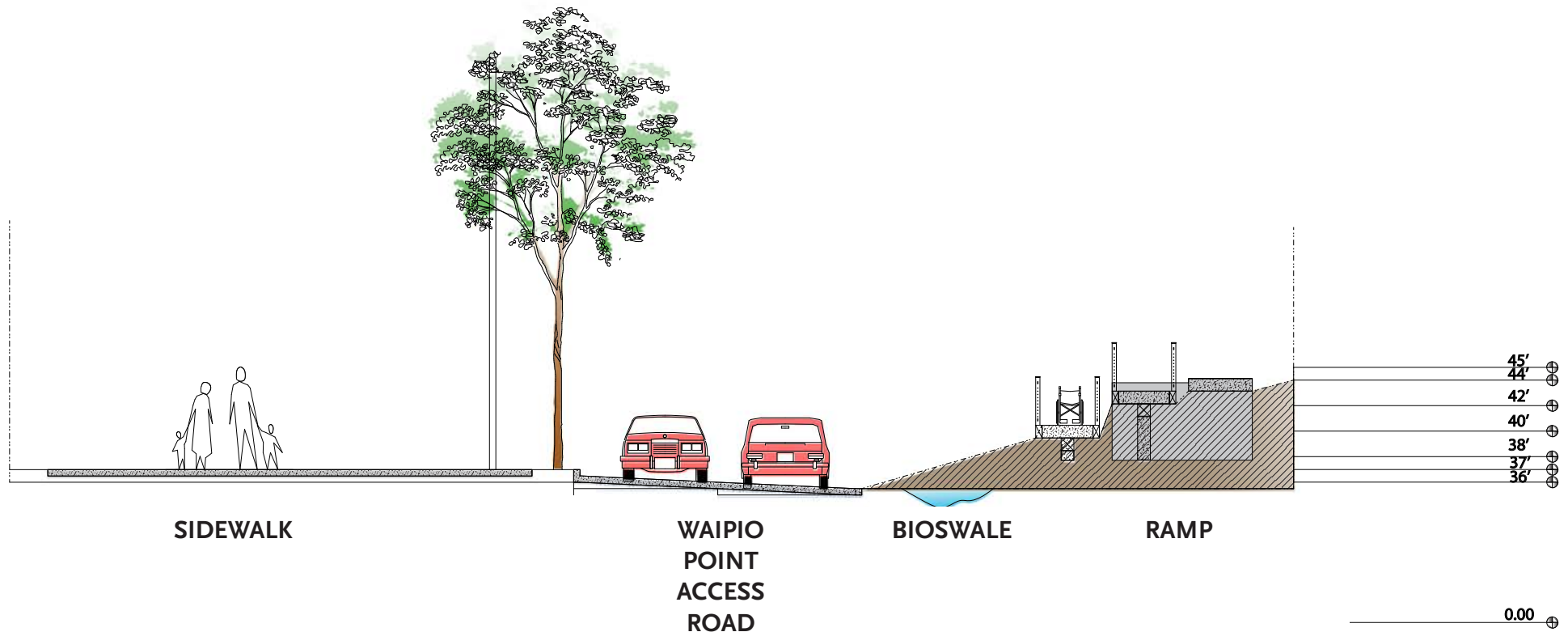
# Poailani Circle Roundabout Section



SCALE: 1/16" = 1'

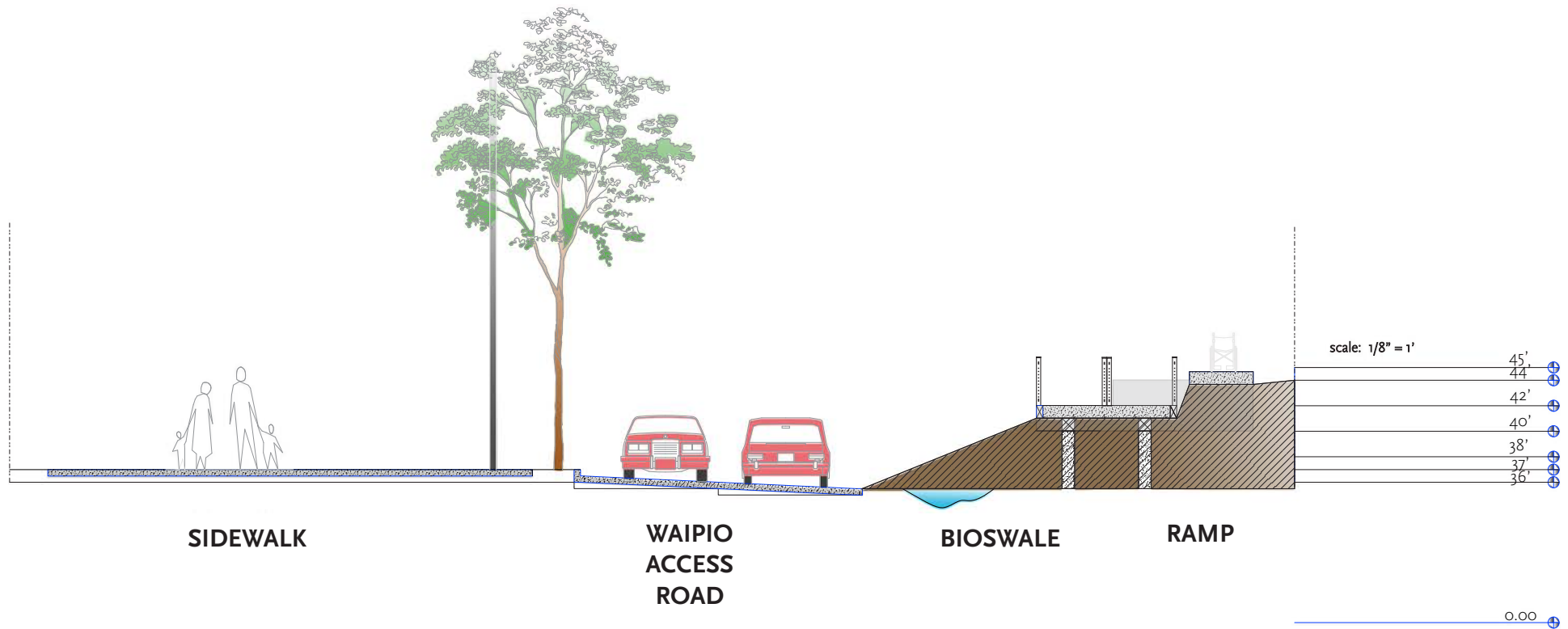


# Accessible Ramp Section



SCALE: 1/8" = 1'

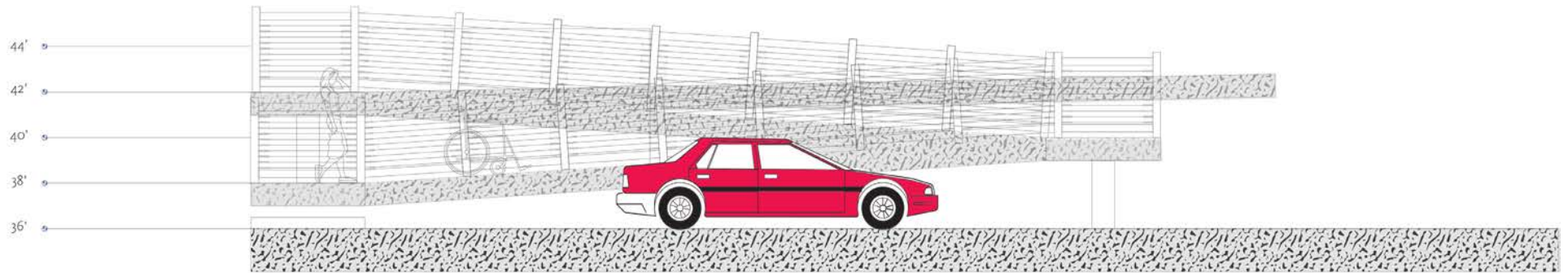
# Accessible Ramp Section



SCALE: 1/8" = 1'

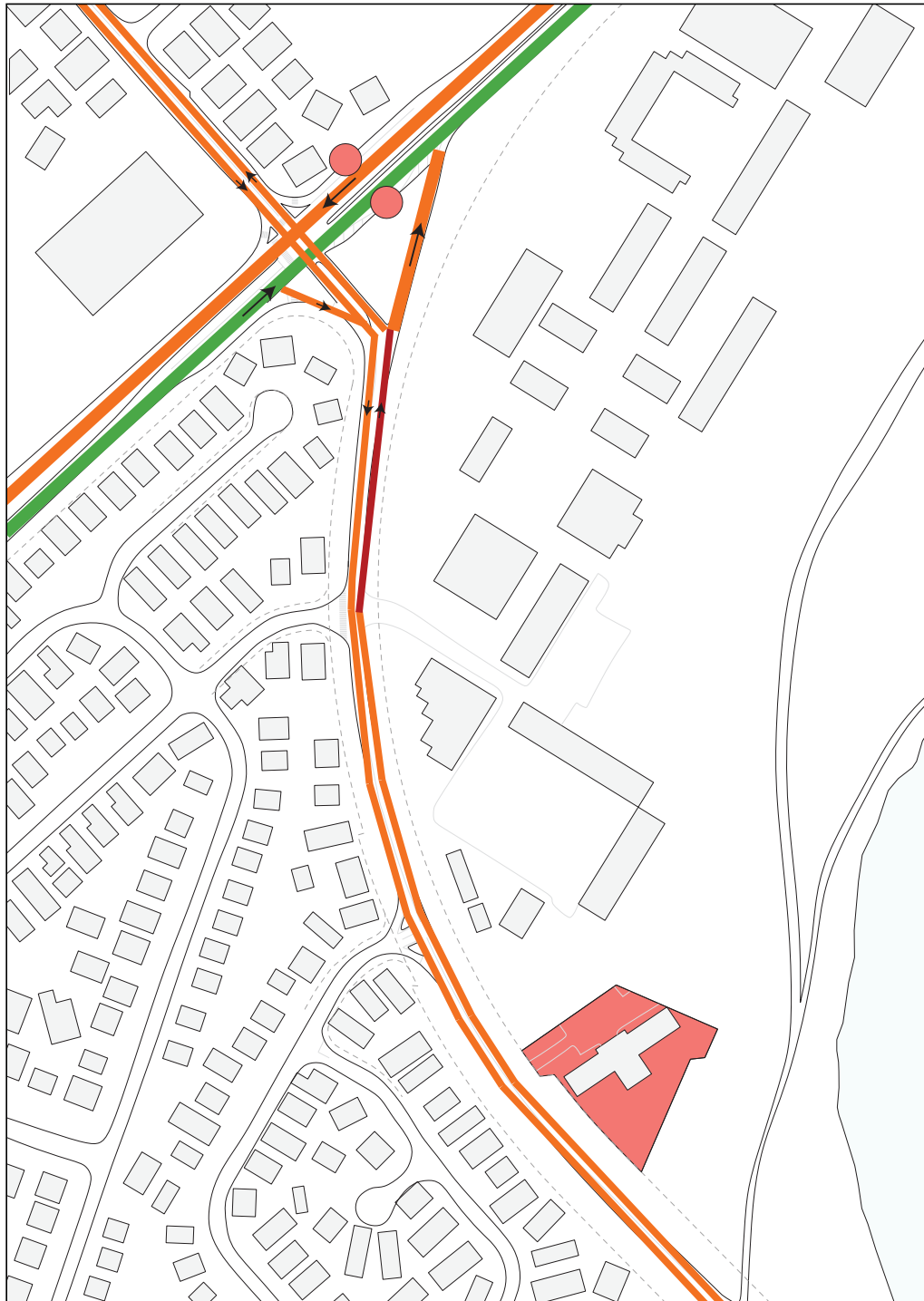


# Accessible Ramp Section



SCALE:  $1/8" = 1'$

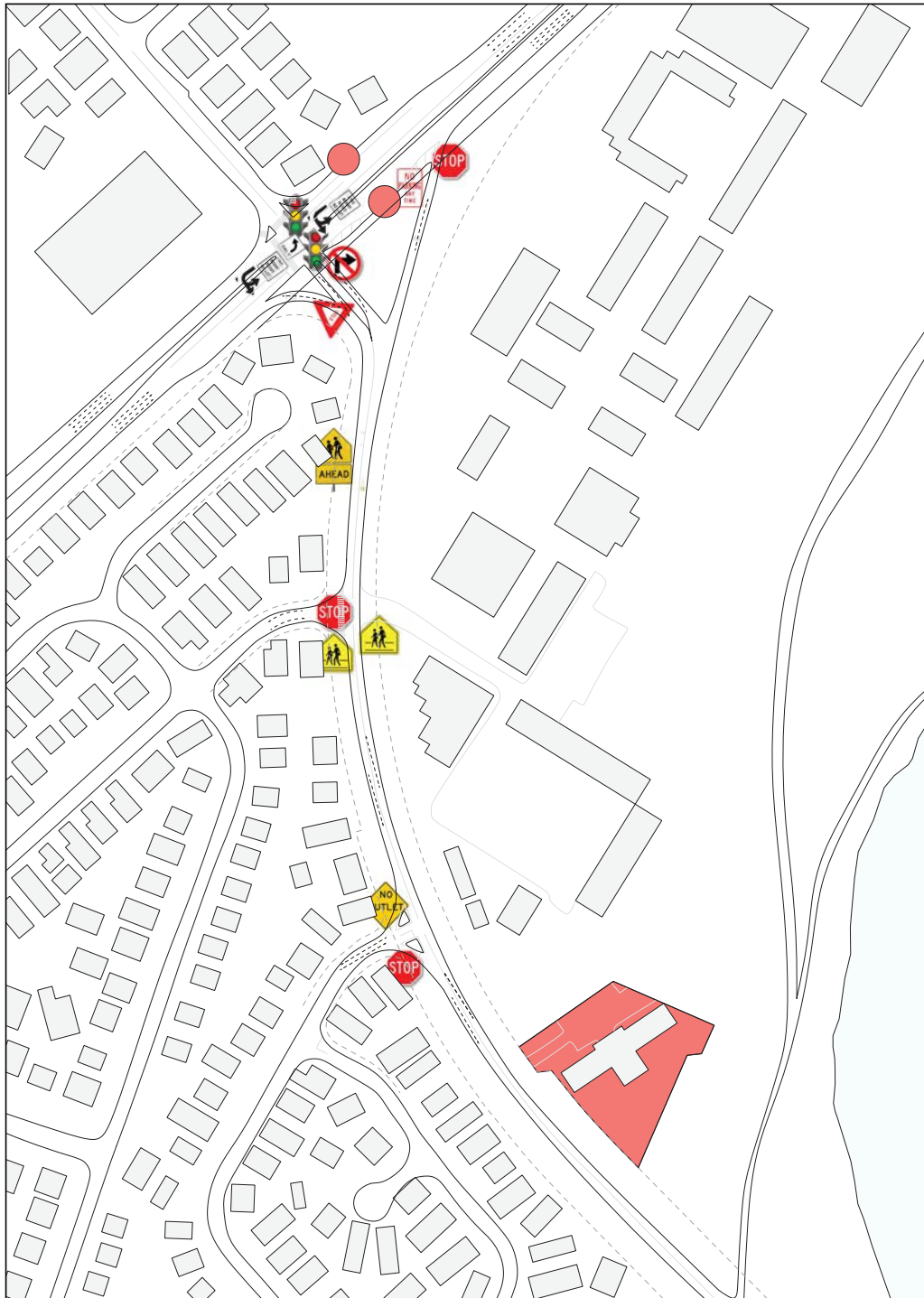
# Appendix



Waipahu Aloha  
Clubhouse  
Site Analysis  
07/18/16 DRAFT  
**VEHICULAR  
TRAFFIC  
CONDITIONS  
DIAGRAM**

**SHADE**  
Summer Institute 2016





----- Traffic direction

Waipahu Aloha  
Clubhouse  
Site Analysis

07/18/16 DRAFT

# REGULATORY SIGNAGE DIAGRAM

**SHADE**  
Summer Institute 2016



- traffic signals
- utility poles
- traffic box
- manholes
- cross walks
- metering boxes
- paved sidewalk
- - - asphalt sidewalk
- - - asphalt (narrow) sidewalk
- - - dirt sidewalk
- - - overgrown vegetation (sidewalk unusable)
- - - sidewalk - grass

**Waipahu Aloha  
Clubhouse  
Site Analysis**

**07/18/16 DRAFT**

## **RIGHT OF WAY CONDITIONS DIAGRAM**

**SHADE**  
Summer Institute 2016



- Trees
- Shrubs and Bushes

Waipahu Aloha  
Clubhouse  
Site Analysis  
07/18/16 DRAFT  
**NATURAL  
VEGETATION  
DIAGRAM**

**SHADE**  
Summer Institute 2016